

Whiston Hospital Emergency Department Monthly Bulletin: October 2009 to September 2010

This bulletin provides a breakdown of all injury attendances at Whiston Hospital Emergency Department (ED) between October 2009 and September 2010. Injury attendance peaked in May (n=4,840), with February (n=3,602) having the least number of injury attendances (**Figure 1**).

For all months there were slightly more male (53%) injury attendances than female presenting at Whiston Hospital ED (**Figure 1**). Over a third (34%) of injury attendances were made by people aged 30 - 59 years and 26% by people aged 60 and over (**Figure 2**). The majority (96%) of injury attendances to Whiston ED stated their ethnicity as white (**Table 1**).

Table 2 illustrates the mode of arrival for patients presenting with injuries. The primary mode of arrival for injury attendances was private transport (61%).

Table 3 presents injury attendances by source of referral. Two-thirds (66%) of injury attendances self-referred.

Table 4 details the injury group of injury attendances. The majority (72%) of injury attendances were recorded as other injury. Of those attendances where an injury group was specified 46% were falls and 28% were road traffic collisions (RTCs). Assault attendees presenting at the Whiston ED between October 2009 and September 2010 were mainly male (60%) and 36% were aged between 30 and 59 years.

Table 5 shows the method of disposal of injury attendances; over four in ten (44%) attendees were discharged requiring no follow-up treatment.

Figure 1: Gender of injury attendances by month, October 2009 to September 2010

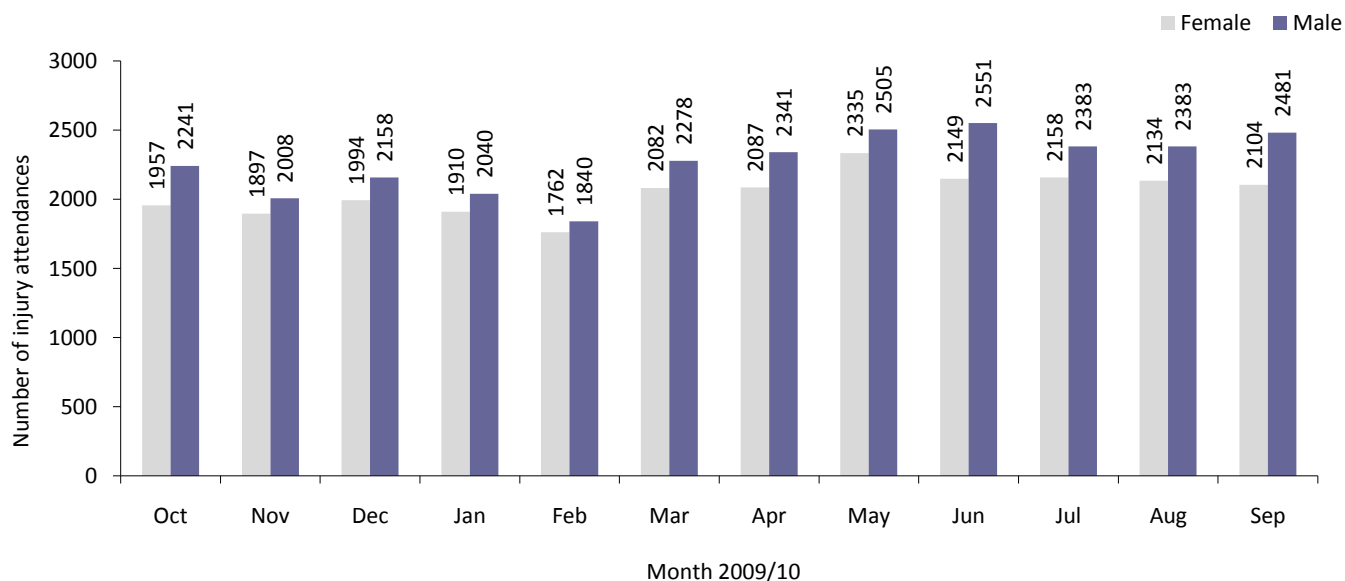


Figure 2: Age group of injury attendances by month, October 2009 to September 2010

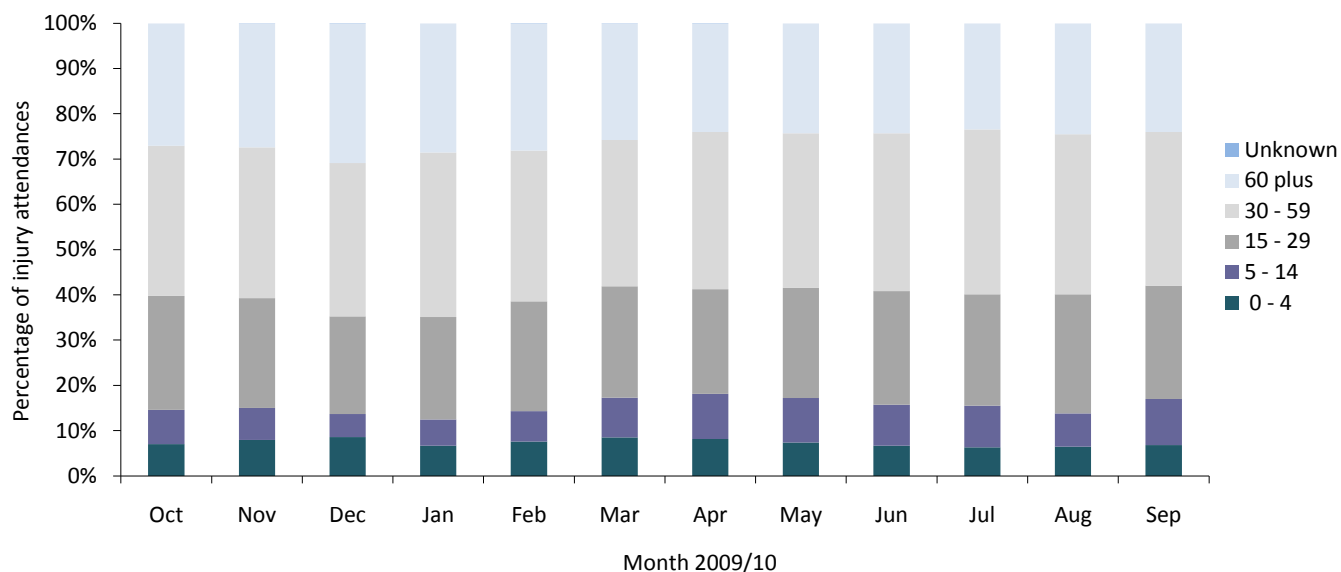


Table 1: Ethnicity of injury attendances, October 2009 to September 2010¹

Ethnicity	Oct	Nov	Dec	Jan	Feb	Mar	Apr	May	Jun	Jul	Aug	Sep	Total	%
White	4013	3768	4001	3786	3459	4205	4265	4650	4532	4383	4340	4413	49815	96
Black African	75	61	76	60	67	69	59	79	77	71	84	75	853	2
Other	38	18	15	33	24	23	23	25	27	31	24	39	320	1
Chinese	12	13	19	13	11	19	20	26	15	15	21	19	203	0
Unknown	17	9	***	16	17	10	24	11	9	13	12	10	152	0
Black Caribbean	18	9	9	17	5	9	13	18	13	9	9	8	137	0
Not stated	8	10	10	9	***	11	7	8	12	7	6	6	98	0
Bangladeshi	***	6	***	7	***	7	***	8	5	5	6	***	57	0
Other Asian background	***	***	5	***	9	***	***	5	***	5	9	***	54	0
Black other	***	***	6	***	***	***	***	***	***	***	***	***	28	0
Pakistani	***	***	***	***	***	***	***	***	***	***	***	***	22	0
Indian	***	***	***	***	***	***	5	***	***	***	***	***	21	0
Asian Bangladeshi	***	***	***	***	***	***	***	***	***	***	***	***	18	0
Total	4198	3905	4152	3950	3602	4360	4428	4840	4700	4541	4517	4585	51778	100

Table 2: Injury attendances by mode of arrival, October 2009 to September 2010

Mode of arrival	Oct	Nov	Dec	Jan	Feb	Mar	Apr	May	Jun	Jul	Aug	Sep	Total	%
Private transport	2433	2305	2291	2280	2131	2637	2827	3058	2983	2897	2806	2881	31529	61
Ambulance	1435	1330	1547	1411	1242	1388	1332	1479	1397	1337	1363	1436	16697	32
Public transport	196	148	181	139	133	199	155	160	174	144	159	123	1911	4
Walked in	79	59	73	68	56	86	70	76	90	111	121	92	981	2
Police	22	24	27	23	22	21	21	27	23	25	44	33	312	1
Other	22	18	23	21	15	19	16	16	20	20	16	17	223	0
Unknown	11	21	10	8	***	10	7	24	13	7	8	***	125	0
Total	4198	3905	4152	3950	3602	4360	4428	4840	4700	4541	4517	4585	51778	100

¹ *** Please note that all numbers less than five have been suppressed in line with patient confidentiality and if there is only one number less than five in a category then two numbers will be suppressed at the next level (e.g. <6) in order to prevent back calculations from totals.

Table 3: Source of referral for injury attendances, October 2009 to September 2010

Source of referral	Oct	Nov	Dec	Jan	Feb	Mar	Apr	May	Jun	Jul	Aug	Sep	Total	%
Self-referral	2701	2559	2911	2524	2322	2799	2836	3369	3175	3190	3005	2773	34164	66
GP	561	460	325	556	425	521	512	360	478	429	499	710	5836	11
Family member	432	422	381	435	425	540	581	568	535	454	537	523	5833	11
Emergency services	103	94	160	98	123	126	136	138	157	132	137	167	1571	3
Other referrer	127	145	140	129	101	132	117	126	123	103	111	134	1488	3
Walk-in-centre	120	98	101	91	96	115	123	138	110	124	117	145	1378	3
Other hospital	48	50	52	42	33	41	38	44	39	41	37	41	506	1
Carer	47	35	33	34	27	36	32	46	33	28	24	32	407	1
Educational establishment	20	15	13	19	16	14	18	15	16	7	15	19	187	0
Employer	19	13	13	11	15	16	14	7	16	13	14	17	168	0
Police	18	12	15	9	12	9	12	15	13	13	13	14	155	0
Unknown	***	***	5	***	***	7	***	7	***	7	8	6	49	0
District nurse	***	***	***	***	***	***	***	***	***	***	***	***	26	0
Primary care	***	***	***	***	***	***	***	5	***	***	***	***	10	0
Total	4198	3905	4152	3950	3602	4360	4428	4840	4700	4541	4517	4585	51778	100

Table 4: Injury attendances by injury group, October 2009 to September 2010ⁱ

Injury group	Oct	Nov	Dec	Jan	Feb	Mar	Apr	May	Jun	Jul	Aug	Sep	Total	%
Other injury	3077	2801	2722	2881	2602	3225	3266	3468	3424	3316	3279	3360	37421	72
Fall	458	483	809	499	434	502	530	601	620	576	564	532	6608	13
RTC	340	333	349	274	303	342	323	404	331	339	376	378	4092	8
Assault	125	93	132	98	82	86	105	123	138	97	107	92	1278	2
Burns and scalds	80	78	76	70	58	76	71	113	87	92	85	71	957	2
Sports injury	68	69	17	77	73	76	87	74	55	58	69	88	811	2
Ingestion	29	24	31	24	28	21	26	33	29	40	16	33	334	1
Deliberate self-harm	21	24	16	27	22	32	20	24	16	23	21	31	277	1
Total	4198	3905	4152	3950	3602	4360	4428	4840	4700	4541	4517	4585	51778	100

Table 5: Discharge destination of injury attendances, October 2009 to September 2010

Discharge	Oct	Nov	Dec	Jan	Feb	Mar	Apr	May	Jun	Jul	Aug	Sep	Total	%
Discharged no follow-up	1701	1623	1667	1676	1571	1933	2007	2191	2200	2157	1904	1989	22619	44
Admissions	851	824	848	752	841	1521	1393	1521	1423	1357	1429	1454	14214	27
Discharged to GP	210	182	177	242	203	286	329	370	319	328	430	445	3521	7
Emergency admissions unit	782	712	737	710	460	***	***	***	***	***	***	***	3401	7
Did not wait	174	158	205	90	109	171	219	262	244	211	252	225	2320	4
Fracture clinic	190	132	217	190	168	166	183	193	207	190	213	229	2278	4
Other	98	93	110	82	96	84	93	85	91	73	115	100	1120	2
ED review clinic	51	47	32	53	42	53	53	68	76	81	62	57	675	1
Physiotherapy clinic	49	49	37	45	36	47	61	43	33	21	***	***	427	1
Sent to other hospital	29	31	40	26	25	31	22	32	37	37	36	35	381	1
Outpatient clinic	19	19	19	24	15	23	34	27	23	23	23	23	272	1
Return for treatment	19	15	33	26	20	22	12	23	31	30	17	15	263	1
Discharged with ear/nose/throat appointment at Whiston	21	18	23	26	15	22	19	21	16	33	32	11	257	0
Sent to GP assessment unit	***	***	5	6	***	***	***	***	***	***	***	***	20	0
Discharged returning to ED GP clinic	***	***	***	***	***	***	***	***	***	***	***	***	10	0
Total	4198	3905	4152	3950	3602	4360	4428	4840	4700	4541	4517	4585	51778	100

Published January 2011

Jennifer Brizell (TIIG Project Officer)

Centre for Public Health, Liverpool John Moores University, 3rd Floor, Henry Cotton Campus, 15-21 Webster Street, Liverpool, L3 2ET

Tel: 0151 231 4500 Email: j.s.brizell@ljmu.ac.uk

Website: www.tiig.info (please note that all data requests should be made through the TIIG website)

ⁱ Due to low numbers and patient confidentiality firework injuries have been categorised under other injury.